

PRODUCT CODE: SBS32B
SPACER BAR SADDLE



DESCRIPTION

32mm Spacer Bar Saddle

FINISH

Black Enamel

MATERIAL

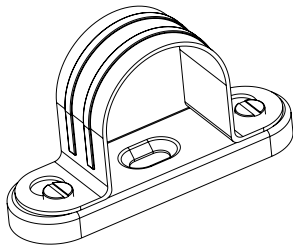
Pressed Steel

PACKAGING

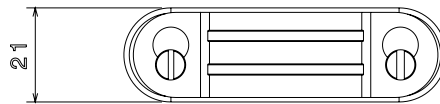
Packed in qty 50

ADDITIONAL NOTES

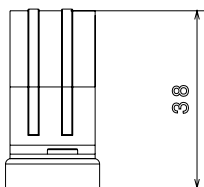
Conforms to BS EN61386-1:2008
Compliant to LU Standard 1-085 (for use on surface & sub-surface locations)



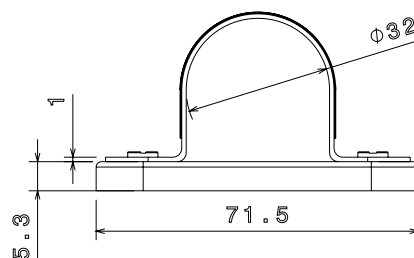
Isometric view



Top view



Side view



Front view